

# HORCHOW @HOME

## *Tale of two houses*

A WORLD OF DIFFERENCE  
IN BACK-TO-BACK  
FEATURE HOMES

*Summer entertaining*

TIPS, TRICKS, & TABLE ACCENTS

*Haute enough for you?*

COOL LOOKS FROM DESIGNING WOMEN





see on page 4



see on page 12



see on page 26



see on page 19

# c o n t e n t s

- 4 | **Horchow@Home I**  
Jadz and Pat Pate planned their new home around entertaining that flows seamlessly from indoors to outside
- 12 | **Summer Entertaining**  
Top 10 ideas for fun in the sun (and the shade)
- 20 | **Horchow@Home II**  
Martha Darst makes a big statement with a compact townhouse
- 26 | **Designing Women**  
Lighthearted looks that score in style and smiles
- 32 | **Favorite Things**  
Moroccan glasses are just our cup of tea

from the **editor** When we were growing up, it was just a backyard barbecue, with burgers and hot dogs on the grill, paper and plastic on the picnic table. We much prefer outdoor entertaining today: comfortable seating, beautiful settings, and imaginative menus that erase the old line between inside and out. With this issue of Horchow@Home, we offer inspiration for parties whenever the weather is lovely (which, right now, would seem to mean October). And we have not one but two feature homes with very different outside options: one a cozy courtyard, the other an expansive poolscape that flows into the kitchen/dining area, both enormously inviting!

We also shine the spotlight on five women who share an abundance of lighthearted imagination in their designs for the home. From the tropical colors of Lulu DK and Lilly Pulitzer to Amanda Brisbane's sculptural glass bowls and the funky/exotic creations of Jamie Young and Janice Minor, they share a commitment to good design that makes us smile.

Enjoy this issue as we begin compiling stories for our fall and holiday magazines – and if you have any suggestions, please post them on our Facebook wall! *-Karen Muncy*



*Another nice thing about being a design professional*

# HORCHOW TO THE TRADE

OUR SPECIAL PROGRAM OFFERING DISCOUNTS & MORE

[CLICK FOR MORE INFORMATION >](#)





ABOVE: Large X-design lanterns flank the front door, which opens into a two-story hallway that extends the length of the house. RIGHT: The piano room is dominated by a spiky bronze chandelier and a fireplace flanked by twin Italian chests, French gilt mirrors, and Randall Powers' black marble urn lamps. The firescreen is a simple sheet of glass in a polished nickel base. The Alexa Hampton sofa is covered in Belgian linen; periwinkle silk adds a subtle pop of color on the slipper chair. The bronze coffee table is a classic Billy Baldwin design. Simple sisal carpeting and white beadboard ceilings add "textural crunchiness."

# @HOME

*with Jadz & Pat Pate*

HILL COUNTRY ARCHITECTURE  
EMBRACES A LIFE OF  
RELAXED ELEGANCE AND  
INDOOR/OUT ENTERTAINING

First things first: her name is Polish and it's pronounced "yahj" (almost rhymes with "dodge"). She's a Chicago transplant to Texas' blackland prairie and a vice president of creative services for Neiman Marcus; he's a Lone Star businessman with one boot in the city and the other on a beloved nearby ranch.

When they began planning their home nearly two years ago, the Pates started with a sketch on a paper napkin. "He wanted it to be like an H, with the kitchen and dining area in the center – he has a good eye for architecture," Jadz says. They worked with designers Jan Jones and Lisa Martensen and a notebook of paint chips, fabric swatches, and pages Jadz had torn from design magazines ("I'm a tear fanatic," she admits). The result is an environment that is elegant yet relaxed and welcoming, with a feeling of spaciousness that belies the actual square footage.

INTERIOR DESIGN: JAN JONES & LISA MARTENSEN



inspired?  
get this look.  
*see page 10*

PHOTOGRAPHY: MATTHEW SAVINS

ART DIRECTION: TREY HOFFMANN

STORY: KAREN MUNCY



The center of the Pate home is an open kitchen/dining room with a wall of glass doors opening on the flagstone patio and lagoon-style pool. A wide white marble island separates the cooking area (with its six-burner Wolfe range) from the 144"-long refectory table and slipcovered white chairs. A 15-light iron-and-wood chandelier by Suzanne Kessler is embellished with white ceramic drops and clear crystals.



The built-in buffet, also topped with white marble, provides extra serving space, with storage below for tableware and linens. Art by Saa is from Craighead-Green Gallery, Dallas.

**inspired? get this look.** *see page 10*





inspired?  
get this look.  
*see page 10*

“I love the way our house is focused on the patio and pool area. When the doors are open, the outside just becomes another room.”

The master bedroom also opens onto the pool and patio, but unlike the pale neutrals of the public spaces, its palette is deeper, with the platform bed and oversized reading chair upholstered in muted grays that echo the walls (“Stormy Monday” from Benjamin Moore). The faux fur throw, lined in purple satin, was a surprise housewarming gift from the designers. A midcentury-modern tufted bench punctuates the foot of the bed. Outdoor seating is cushioned in crisp white with colorful decorative pillows adding extra comfort. The space flows seamlessly from the dining room and kitchen for effortless warm-weather entertaining.





## inspired? get the look



'Slated' Chair, 1718.90; Mosaic Lamp, 479.90; 'Gold Kiana' Mirror, 395.00; Champagne Ottoman, 1999.00



Rope & wood buffet serveware, 40.00-50.00; 'Erica' Dinign Chair, 799.00; French Bead Chandelier, 1475.00; 'Morph' Vases, 40.00-45.00



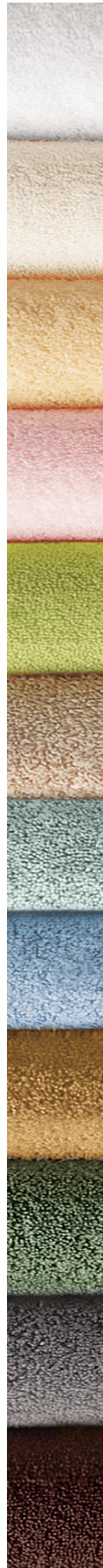
Large X-design Lantern, 185.00 each; Trina Turk Pillows, 295.00 each; 'Parisian' Planters, 474.90-594.90



## What makes it a party? THE PATES' TOP 10

- 1 Our three sons & daughters-in-law (when they're in town) and our good friends
- 2 Fresh flowers – tall on the sideboard, low on the table
- 3 Scented candles in the powder room
- 4 A fun cocktail to start the party
- 5 A mix of dinnerware patterns
- 6 Classic white hemstitched napkins
- 7 A 'big-dish' main course like paella or Texas-classic King Ranch Casserole
- 8 A simple dessert (like homemade banana cake)
- 9 Music (especially jazz)
- 10 Gracie, their wheaton terrier – “our dining room is dog-friendly”





# take it outside

**TOP 10** WAYS TO MAKE THE MOST  
OF THE REST OF SUMMER  
(& the first of Fall)

**1** *Stock up on bath sheets for a pool party. A stack of white is very chic, but an assortment of colors (14 in our exclusive Marcus Collection) helps guests keep track of theirs between dips.*

**2** *Yes, it's a personalized beverage tub, but how cool to offer inexpensive white flip-flops in a range of sizes?*



*The party goes on after the sun goes down with strategically placed fire urns - lightweight, long-burning, and oh-so-atmospheric.*

**3**



**4** *Leave the picnic coolers for picnics! This sleek bowl-shaped beverage table has a scooped-out space for ice.*





**5** Designer Michael Aram embraces the reality of outdoor buffets with gorgeous *serving pieces* in acacia wood and oxidized bronze. Our favorite things: the *steel mesh lids* to keep bugs at bay, and the *kabob server* with notched sides to hold the skewers.



Italians know a thing or two about outdoor entertaining (supper on a terrace in Tuscany can be very inspiring). We like their casual approach to beverages outdoors: leave the stemware inside and opt for *flat-bottomed glasses*. Or go with GG Collection's *goblets* on sturdy metal pedestals.



**6** Offer choices but don't go overboard: just make sure there are a couple of options for vegetarians, and leave the super-spicy seasoning to the condiments so guests can fire it up or not. Edit your menu to a few great dishes and make sure there's plenty of each, presented in *big bowls and platters*.



take it *outside*

Designated pitcher: clear melamine 'Marcelle' is the perfect choice for lemonade, tea, or White Peach Sangria (see recipe).

### White Peach Sangria

#### Ingredients

3 tablespoons fine sugar  
3 shots peach liqueur  
4 freestone peaches, sliced  
1 lemon, sliced  
1 bottle dry white wine  
1 pint raspberries  
Club soda (to add when serving)

#### Directions

At least 4 hours before serving, mix sugar, liqueur, lemon, and peaches in pitcher. Add wine and refrigerate. Use a large slotted spoon to scoop a few pieces of fruit into each glass, toss in a few raspberries, and pour liquid mixture over. Add a splash of club soda, and enjoy!





## take it *outside*



### *Grilled Watermelon & Arugula Salad*

#### *Ingredients*

Watermelon cut into flat wedges  
Cooking spray  
Arugula  
Feta cheese  
Olive oil  
Balsamic vinegar  
Honey  
Dijon mustard  
Red wine vinegar



#### *Directions*

Lightly coat melon wedges with cooking spray and grill about 8 minutes per side, just until grill marks show and juices begin to caramelize. Set aside to cool.

In a small jar with tight-fitting lid, combine vinegars, honey, and mustard; cover and shake to combine. Taste and adjust to your preference. Toss with arugula in a large bowl, sprinkle generously with crumbled feta, and surround with watermelon.

In real estate, it's location, location, location - in buffets, it's height, height, height. We love these casual *galvanized metal stands* with clear glass domes in three heights for a dramatic dessert "skyline."

9



10

Skip the plastic utensils. *Real flatware* is easier to use and adds more to your table setting; choose handles in casual finishes (colorful resin, natural bone) or interesting shapes (bamboo, coral).



take it *outside*

# hurricane SEASON

The perfect lighting for outdoor entertaining, glass-walled hurricanes provide the ambience of candlelight while protecting the flame from breezes (and protecting guests from the flame). The idea originated in the 18th century when Francois-Pierre Aime Argand topped an oil lamp with a glass chimney, but today's designs are primarily for pillar or votive candles.



C



D



E



F



**A** Like the windows in an Arts & Crafts house, this square hurricane is made by hand of geometric glass panels with beveled edges that catch the light. 395.00. **B** Arteriors takes inspiration from the upturned roofline of a pagoda for this brass hurricane with glass windows. 24" tall, 595.00 **C** Designed by Erika Lagerbielke for Orrefors, this votive has a glass tent hand-painted with tiny crystals for low-profile, high-impact sparkle. 75.00. **D** Ribbed glass is silvered for the look of antique mercury glass atop a black-finished aluminum base. 22" tall, 225.00. **E** A towering 36" tall, dramatic Naomi has an elongated tulip-shaped glass cup on a baroque aluminum pedestal. Set of two, 875.00. **F** Use one large or several small pillars in the capacious Mogador hurricane, 12" square and 32" tall. The stainless steel frame has a polished nickel finish. 365.00.



# @HOME

*with Martha Darst*



A large central room functions both as a living room and a breakfast room. "I used to let rugs define the spaces, but now I simply let the furniture do that," Martha says. The backs of the chairs form a dividing line without closing off the space. "I loved those from the first time I saw them," Martha says of Horchow's Bird on a Wire chairs. "They're so comfortable, and their size is just right." Pillows and a throw from Horchow soften the lines of the sofa and add texture.

PHOTOGRAPHY: MATTHEW SAVINS  
STORY: MEREDITH FRAZIER  
ART DIRECTION: TREY HOFFMANN  
STYLING: PHILLIP MONTANEZ



## A COMPACT TOWNHOUSE MAKES AN EXPANSIVE STATEMENT ON LIVING WELL

As an art history major and avid art collector, Martha Darst knows a thing or two about perspective. Working in the marketing department for The Neiman Marcus Group hasn't hurt, either. "I think it's important to keep results and responses in perspective and consider them in proportion to the overall campaign and objectives," she says about her job. That philosophy has served her well when it comes to creating efficient, effective rooms in her two-bedroom, 1,500-square-foot townhome, too.





In the dining room, the same chair that sits at her great grandfather's desk goes to work at the head of the table when Martha entertains. "As with my mixing of antiques and contemporary art, I like the mix of seating options and styles at this table. It's just a fresher approach than a matching, formal suite would be, and it doesn't overwhelm the space."



**inspired? get this look.** *see page 25*



Martha's charming patio is a natural extension of her living room. "When I entertain and the weather's nice, people tend to gravitate to this space. I have lights in the tree that add to the festive atmosphere."





"I don't think smaller rooms always mean dainty furnishings. You can play with proportions," Darst tells us. In the guest room, an oversized headboard makes a bold statement, while neutral linens and a smaller-scale chair add balance — and a warm welcome.

"My mother is a collector and has a great, eclectic sense of style," Martha says. "I realize that has really influenced my own tastes — especially since we often shop together and encourage each other's purchases!" In her entryway, Martha displays a contemporary Amanda Brisbane sculpture on an antique chest and hangs modern works above it. "I prefer modern art but am drawn to antique furniture for its character and sense of history," she explains. "I like the contrasts of old and new and think they work well together. It makes me appreciate both styles more than if I just chose one or the other." In the space beneath her stairs, Martha pairs a Jonathan Adler chair with her great grandfather's desk, and in the living room, an antique from a church stands beneath a modern painting.



# inspired? get the look

## page 20 - 21



Old Hickory Tannery small leather sleeper, 3,799.00; Carmella bookcase, 4,799.00; Golden Westwood lamp, 395.00; Adrienne Landau pillows & throw, 395.00-1,295.00

## page 22



Carlyle dining table, 1,749.00; Shea bench, 549.00; Chariot bench, 1,649.00; Italia chairs, 999.00/two; 8x10 Ocean Light oushak rug, 3,699.00

## page 23



Woven table & benches, 1,195.00; Julia Knight 'Peony' serving plates, 75.00-185.00

## page 24



Cane matelasse coverlet & shams, 34.90-264.90; navy & ivory pillows, 115.00-145.00; Sonia velvet headboard, 1,099.00/queen; Zebra mini-lamp, 225.00; Amanda Brisbane 'Orange Blaze' bowl, 795.00



# Girls {just want to} have fun

DESIGNERS WHOSE DISTINCTIVE LOOKS SHARE A COMMON POINT OF VIEW: WHERE YOU LIVE SHOULD MAKE YOU SMILE :)

HIDDEN ASSETS GIVE THESE DESIGNS A PLAYFUL DIMENSION

Lilly Pulitzer



BOULEVARD WHITE-LACQUERED TABLE WITH FLOWER-LINED DRAWERS AT EACH END



ROUSSEAU OTTOMAN WITH INSIDE POCKETS FOR SIX PAIRS OF SHOES



SEA & BE SEEN TOTE WITH A PARAKEET HIDDEN IN THE PATTERN



BYZANTINE PORCELAIN DINNERWARE

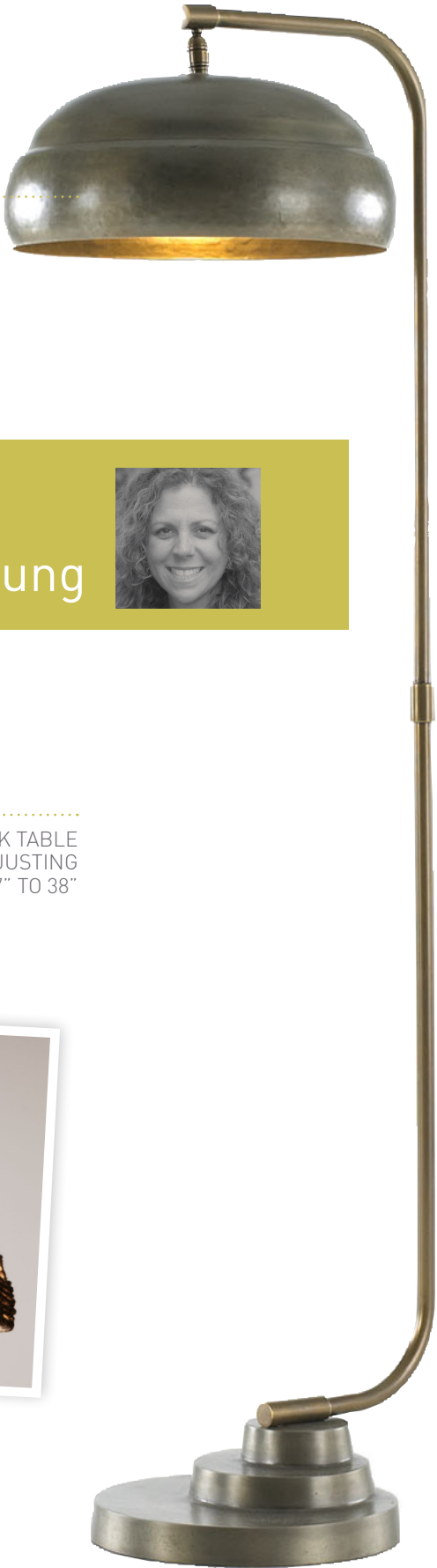


Lulu DK

BUTTERFLIES, BIRDS, AND BLOOMS CELEBRATE NATURE IN CLEAR, FRESH COLORS



THE STEAMPUNK FLOOR LAMP HAS A FUNKY INDUSTRIAL AESTHETIC



HER LOVE OF TEXTURE & UNUSUAL MATERIALS IS THE PAYOFF FROM YEARS OF GLOBE-SPANNING TRAVEL



Jamie Young



THE STEEL CRANK TABLE REALLY CRANKS, ADJUSTING THE HEIGHT FROM 27" TO 38"



WOVEN BY HAND, THE JUTE PENDANT HAS THE CASUAL CHARM OF AN UPSIDE-DOWN BASKET



"BLUE VIOLET" GLASS BOWL

Amanda Brisbane

ONE OF ENGLAND'S FOREMOST ARTISANS, HER BRILLIANT SAND-CAST GLASS BOWLS SEEM FROZEN IN MOTION. THESE ARE EXCLUSIVELY OURS.





SNAKESKIN PATTERNS INSPIRED THIS TIERED CHANDELIER WITH MIRRORED ACRYLIC DISCS

COLORFUL BIRDS ON AN IRON BRANCH CREATE A CHARMING CURTAIN HOLDBACK



Janice Minor



THE NATURAL BEAUTY OF PROVENCE, PORTUGAL, AND MOROCCO INSPIRES HER CLEVER INTERPRETATIONS OF ORGANIC SHAPES & TEXTURES. THESE ARE EXCLUSIVELY OURS.



A FRILLY EPERGNE CONTRASTS WROUGHT IRON WITH PEARLESCENT CAPIZ SHELL



HANDPAINTED WOOD MIMICS PORCUPINE QUILLS IN THIS PRICKLY MIRROR

Imagine a vacation so fabulous,  
people actually want to see your pictures.

# HORCHOW TRAVEL SERVICES

ESCORTED TOURS

INDEPENDENT JOURNEYS

LUXURY CRUISES

PRIVATE JET OR YACHT

Visit [horchow.com/travel](http://horchow.com/travel)

or call 1.800.933.4858 or 1.800.944.9760 weekdays 8:30-5:30 (Central)



## FAVORITE THINGS *Moroccan tea glasses*



### THE TRADITION

Green tea leaves are steeped for as long as 15 minutes, strained into a steel teapot and generously sweetened with sugar, then brought to a boil. Fresh mint is added to the pot. Tea is poured into small glasses decorated with painted or etched designs.

### OUR INTERPRETATION

Elongated gold medallions are painted on 6.75-ounce glasses with bases in purple, amber, turquoise, or green. A set of four includes one of each color.

### HOW TO USE

We love these for juice at a festive brunch, or filled with sangria or wine for a casual supper. Especially outdoors, they're a beautiful and sturdy alternative to stems.

WE'RE ALREADY WORKING ON THE NEXT ISSUE OF **HORCHOW@HOME**.  
STOP BY OUR FACEBOOK PAGE AND DROP OFF YOUR STORY IDEAS! [f](#) >